

# PCZ-L00773 - BUILT-IN INSTALLAATION KIT FOR RIGHT SIDE AIR OUTLET

## Warnings

- ⚠ This instruction is an integral part of the booklet of the appliance on which the kit is installed. Please consult this booklet for general warnings and fundamental safety rules.

⚠ For a rapid and right assembly of the components follow carefully the sequences described in the various sections.
- ⚠ All the operations must be performed by qualified personnel using the required Personal Protective Equipment.

⚠ It is necessary, for right functioning of the device, that during the whole installation phase the working space remains clean.

⚠ Regularly clear away waste offcuts, debris or dirt.

## Installation kit for built-in box for lateral air ventilation DX

- PCZ-L00773 - Built-in formwork for corner installation with right-hand exit

Use this kit to divert air laterally to a perimeter wall when you intend to place the air conditioner on an interior wall.
- The kit consist of:

  - a mould for the side air outlet
  - cable for electrical connection

⚠ This kit is compatible with the only DC Inverter versions.

## Installation arrangement

### Preliminary warnings

- ⚠ Ensure that:

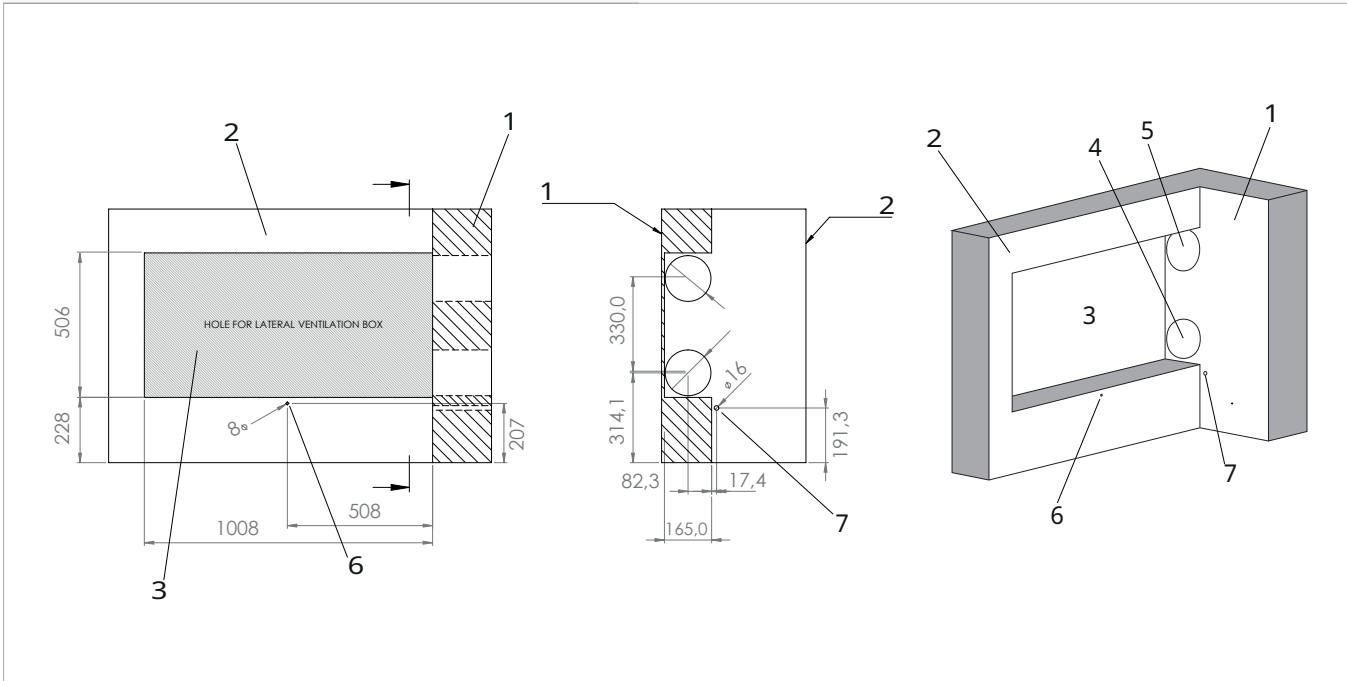
  - the wall supports the weight of the appliance
  - the section of the wall does not contain piping or electrical lines
- the functionality of load-bearing elements is not compromised
  - the supporting surface is perfectly levelled
  - there are no obstructions nearby that could compromise the inlet and outlet airflow
  - air flow is not directed towards by-standers

### Preparation of the wall

To install the unit, prepare the wall for housing the metal casing.

Width	1008 mm
Height	506 mm
Depth	165 mm

1.	External perimeter wall	5.	Air intel hole, 162 Ø
2.	Wall housing mould	6.	Hole for wall locking, 8 Ø
3.	Mould space	7.	Condensate drain hole, 16 Ø
4.	Air outlet hole, 162 Ø		



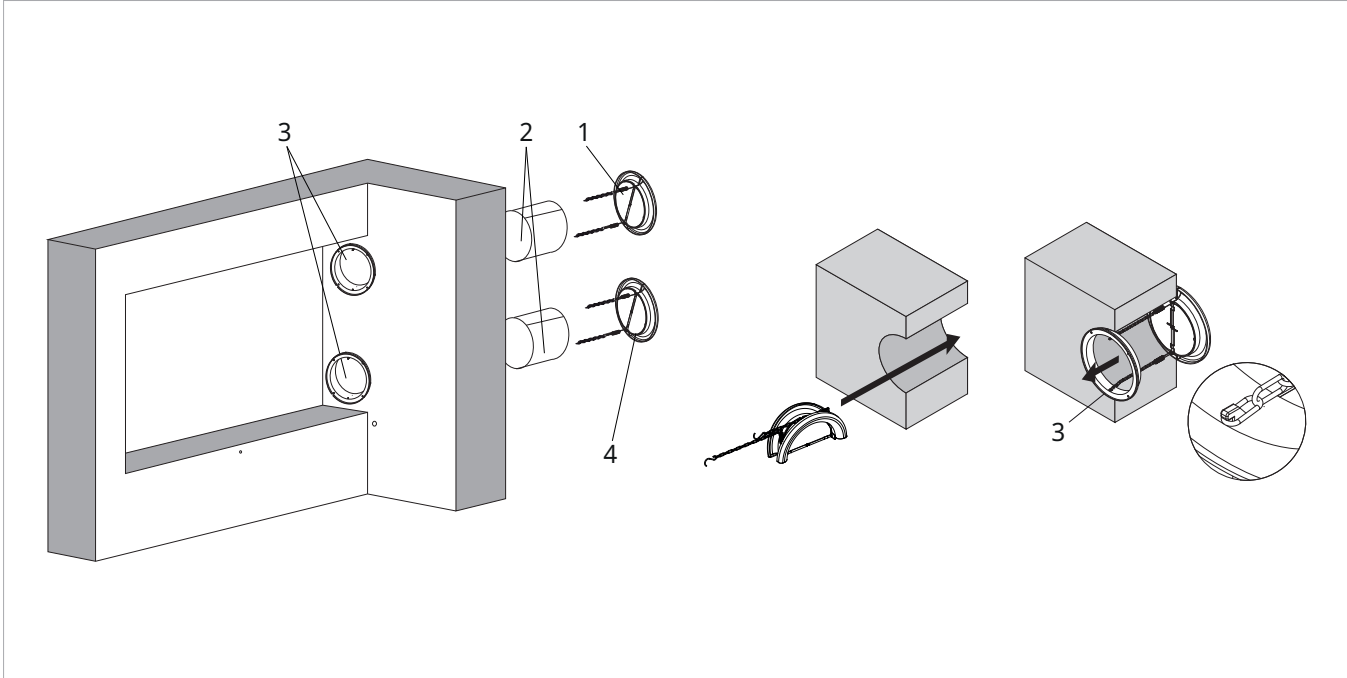
## Kit assembly

### External grids installation

Before proceeding with the installation of the kit, install the external grilles supplied with the appliance.

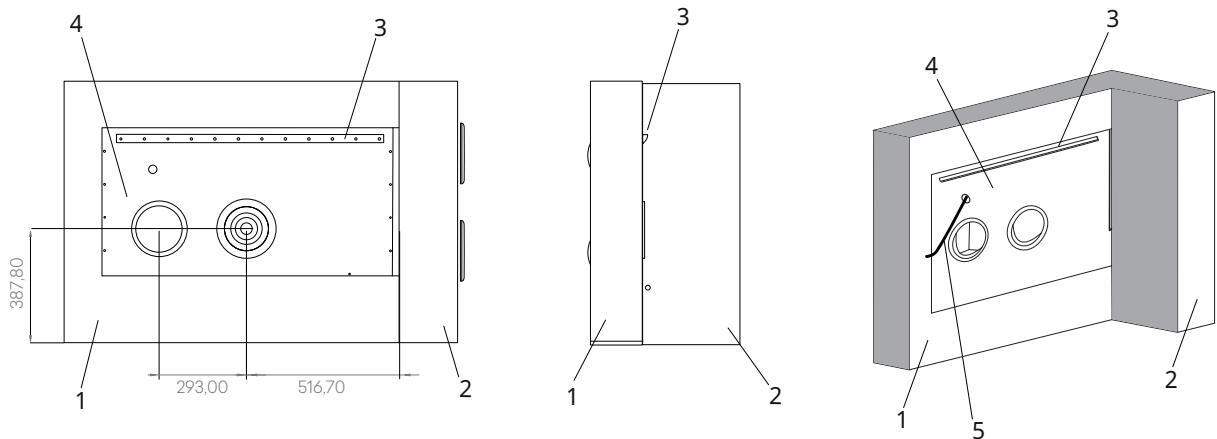
**⚠** For the installation of the external grilles, refer to the installation manual of the appliance on which the kit is installed.

1.	External air outlet grill	3.	Internal grid component
2.	Wall inlet pipes (2pz)	4.	External air intake grill



### Box installation

- |                            |                                    |
|----------------------------|------------------------------------|
| 1. Wall housing mould      | 4. Lateral ventilation box         |
| 2. External perimeter wall | 5. Cable for electrical connection |
| 3. Fixing bracket          |                                    |



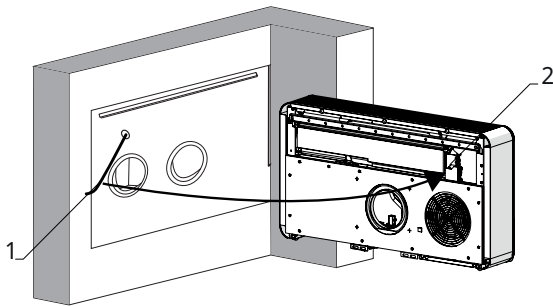
#### To install the metal casing:

- Insert the fromwork completely into the space provided
- Fix into the wall properly the fromwork

### Unit installation

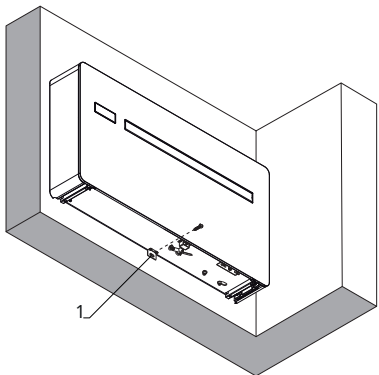
- ⚠ Before installing the unit on the bracket, run the cables coming out of the mould through the left shoulder of the unit.
- ⚠ For the installation of the appliance, refer to its installation manual.

- |                                   |
|-----------------------------------|
| 1. Mould connection cable         |
| 2. Access to electric connections |



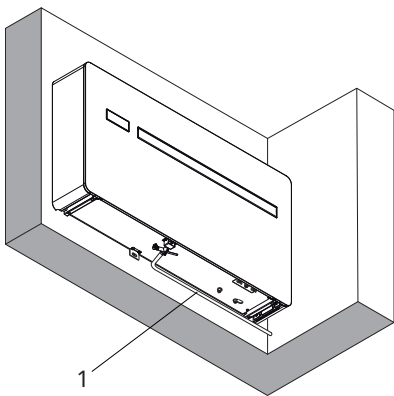
- run the cables through the left shoulder of the device

#### 1. Anti-lifting bracket



- anchor the unit to the wall using the anti-lift bracket located at the bottom of the unit

#### 1. Liquid drain pipe



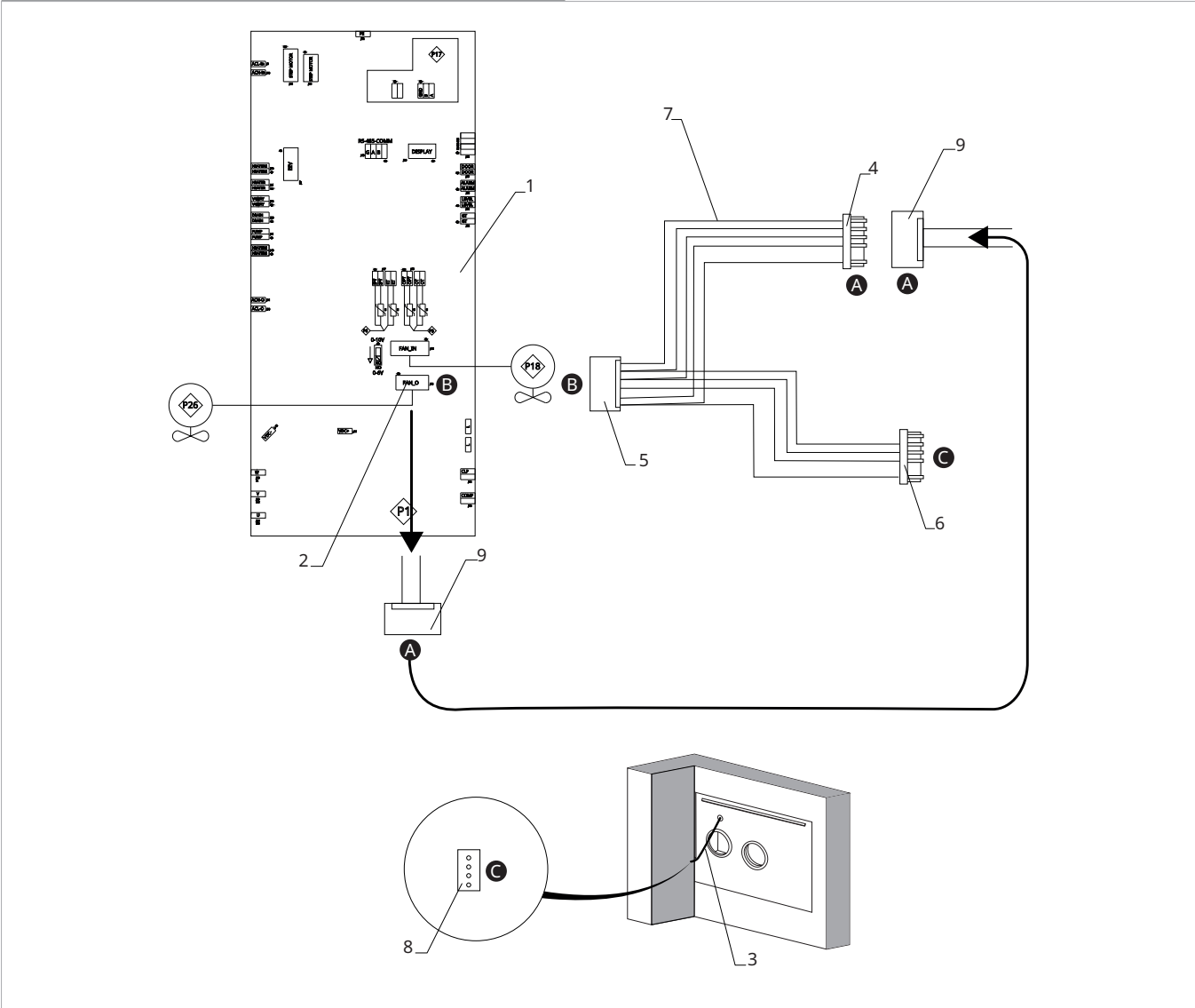
- connect the liquid drain pipe.

Electric connections

Refer to the manual of the appliance on which the kit is installed to access the electrical connections section.

- ⚠ To make electrical connections:
- check that the mould power cables have been correctly routed through the left shoulder of the unit
  - use the cable supplied with the mould

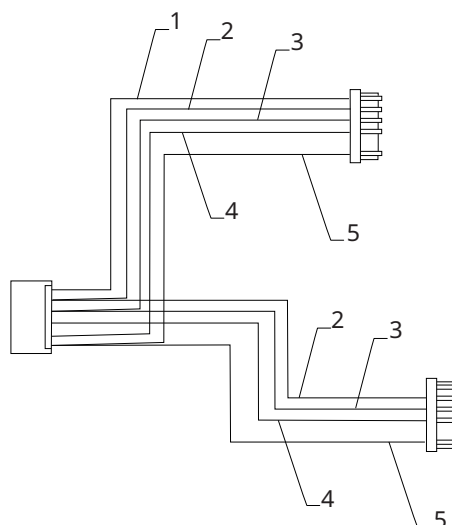
1.	PCB	6.	4-wire, male JST terminal of the wiring harness
2.	Contact J15 fan output	7.	Wiring
3.	Mould connection cable	8.	5-wire, female JST connector of the mould
4.	5-wire, male JST terminal of the wiring harness	9.	JST 5-wire, female fan connector
5.	5-wire, female JST connector of the wiring harness		



- To make the connections:**
- ▶ disconnect the 5-wire, female JST connector of the fan (9) from the PCB (2)
  - ▶ connect the 5-wire, female JST connector of the fan (9) to the 5-wire, male JST terminal of the wiring harness (4)
  - ▶ connect the 5-wire, female JST connector of the wiring harness (5) to contact J15 (2)
  - ▶ Connect the 4-wire, male JST terminal of the wiring harness (6) to the 5-wire, female JST connector of the mould (8)
- ⚠ For connections follow the pairing of the letters A-A, B-B, etc.

1. Blue cable
2. Yellow cable
3. White cable

4. Black cable
5. Red cable



**⚠ Please verify that the cable colours are correctly connected in sequence (blue, yellow, white, black and red) as shown in the picture.**

**⚠ If the connections are not correctly executed, please fix them before proceeding.**